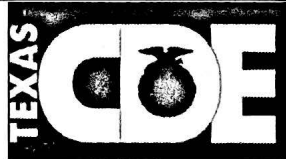


Official Nursery/Landscape CDE Drop Sheet

#	Plant/Tool/Disease	#	Plant/Tool/Disease	#	Exam	#	Exam	#	Practicum
1.	052	31.	104	1.	D	26.	D	1.	D
2.	070	32.	023	2.	B	27.	B	2.	A
3.	091	33.	075	3.	A	28.	A	3.	C
4.	113	34.	043	4.	B	29.	C	4.	B
5.	014	35.	056	5.	D	30.	D	5.	B
6.	165	36.	142	6.	B	31.	A	6.	C
7.	076	37.	003	7.	D	32.	B	7.	C
8.	059	38.	073	8.	A	33.	C	8.	C
9.	067	39.	019	9.	A	34.	A	9.	C
10.	115	40.	120	10.	B	35.	A	10.	A
11.	033	41.	007	11.	D	36.	A		
12.	026	42.	168	12.	A	37.	B		
13.	061	43.	011	13.	B	38.	C		
14.	017	44.	081	14.	C	39.	B		
15.	068	45.	112	15.	A	40.	D		
16.	121	46.	042	16.	B	41.	A		
17.	101	47.	084	17.	A	42.	C		
18.	138	48.	125	18.	B	43.	B		
19.	069	49.	022	19.	C	44.	A		
20.	111	50.	025	20.	A	45.	A		
21.	083	51.	<del>083</del> 063	21.	C	46.	C		
22.	050	52.	100	22.	A	47.	B		
23.	008	53.	026	23.	D	48.	A		
24.	046	54.	178	24.	C	49.	B		
25.	064	55.	010	25.	C	50.	D		
26.	032	56.	087						
27.	002	57.	039						
28.	001	58.	049						
29.	018	59.	035						
30.	049	60.	151						

Practicum
ID Total
Exam
Keep/Cull
TOTAL



Keep/Cull Class #1 (1 1 2 16 3 4 4 3 5 14 6 5 7 1 8 9 ) Officials	
K 2 5 1 8 C 6 3 4 7	Indiv. Points _____
1. SEE POINTS & DESCRIPTIONS	2.
3. ON LOWER PAGES	4.
5.	6.
7.	8.
Keep/Cull Class #2 (1 2 2 4 3 13 4 1 5 7 6 3 7 20 8 10 ) Officials	
K 7 3 8 5 C 2 6 1 4	Indiv. Points _____
1.	2.
3.	4.
5.	6.
7.	8.
Keep/Cull Class #3 (1 4 2 2 3 7 4 16 5 3 6 18 7 5 8 9 ) Officials	
K 6 4 8 3 C 7 1 5 2	Indiv. Points _____
1.	2.
3.	4.
5.	6.
7.	8.
Keep/Cull Class #4 (1 1 2 5 3 16 4 2 5 1 6 3 7 13 8 10 ) Officials	
K 3 7 1 8 C 2 6 4 5	Indiv. Points _____
1.	2.
3.	4.
5.	6.
7.	8.

# PRACTICUM KEY HLSR 2024

① D, 5-13    ② A, 5-11    ③ C, 5-10    ④ B, 5-9

⑤ B, 5-7, 5-8    ⑥ C, only perennial

⑦ C,  $16 \text{ ft} \times 50 \text{ ft} = 800 \text{ ft}^2$  roll

$86 \text{ ft} \times 32 \text{ ft} \times 2 \text{ pads} = 5,120 \text{ ft}^2$

$$\frac{5,120 \text{ ft}^2}{800 \text{ ft}^2} = 6.4 \text{ or } 7 \text{ rolls}$$

⑧ C,  $\frac{6 \text{ gallons}}{1 \text{ min}} \times 45 \text{ min} \times 22 \text{ heads} = 5940 \text{ gal}$

⑨ C,  $\pi r^2 = 3.14 \left(\frac{21.25}{2}\right)^2 = 354.6 \text{ ft}^2$

⑩ A, only small trees

80ft

WEST SHADE NURSERY AREA

21.25ft

32ft

PATHWAY

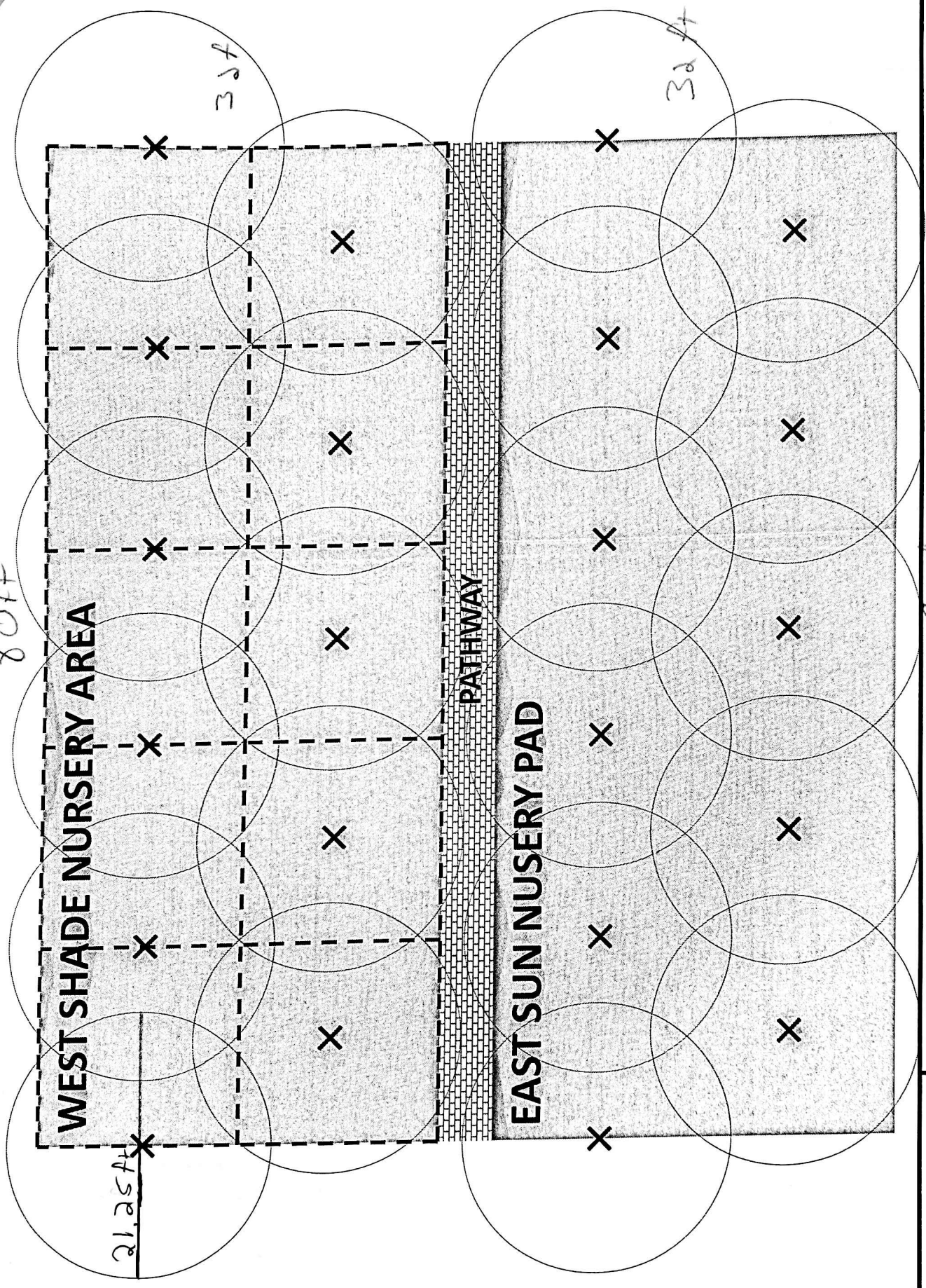
EAST SUN NURSERY PAD

32ft

80ft

3/32 Scale

SFA Lath House  
Designed by SFA Horticulture



**FOR RANK, A IS BEST PLANT, AND H IS WORST PLANT**

**50 SHRUBS GARDENIA / TABLE 1**

PTS	LABEL	RANK	K/C	PLANT / TABLE
16	2	A	K	looks the best. Uniform, no sign of damage.
14	5	B	K	more open and less uniform than A
11	1	C	K	much less uniform than A and B
9	8	D	K	some sign of yellowing starting to appear in lower leaves but still large
5	6	E	C	smaller than A through D. Not uniform in growth. Yellow leaf present.
4	3	F	C	signs of leaf death and browning.
3	4	G	C	more browning than F.
1	7	H	C	more browning than G.

**50 GROUNDCOVER LIRIOPE / TABLE 2**

20	7	A	K	healthy and green, uniform in growth.
13	3	B	K	slightly smaller than A, and a little bit more yellowing.
10	8	C	K	less uniform than A and B.
7	5	D	K	a little bit more yellowing than A and B.
4	2	E	C	smaller and less uniform.
3	6	F	C	is smaller than E. Increased yellowing
2	1	G	C	significant yellowing on lower leaves.
1	4	H	C	more yellowing than G.

**50 ANNUALS 1 VIOLA / TABLE 3**

18	6	A	K	robust, healthy, multiple shoots.
16	4	B	K	full plant. Minimal browning or discoloration, multiple shoots present, coming off base.
9	8	C	K	only one major shoot on the plant.
7	3	D	K	less uniform than A through C.
5	7	E	C	purpling present on lower leaves.
4	1	F	C	yellowing and lack of uniformity on growth.
3	5	G	C	small and significant browning on lower leaves.
2	2	H	C	much more yellowing and browning on lower leaves than G.

**50 ANNUALS 2 TAGETES / TABLE 4**

16	3	A	K	healthy and robust.
13	7	B	K	slightly less uniform than A.
11	1	C	K	slightly smaller than A and B.
10	8	D	K	slightly smaller than A through C.
5	2	E	C	mechanical damage to one flower.
3	6	F	C	less uniform mechanical damage to one flower.
2	4	G	C	small, not well developed.
1	5	H	C	small, not well developed. And there is some abnormal growth on the lower leaves.